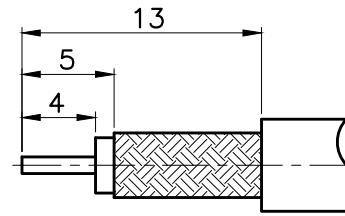
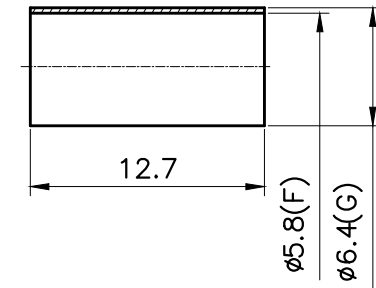
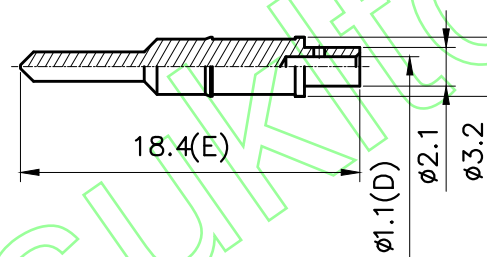
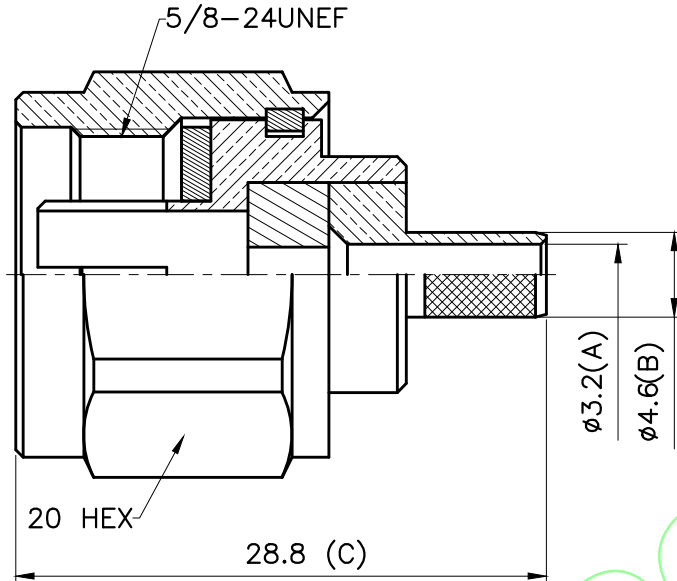


REVISIONS		
ISS	DESCRIPTION	DATE

RoHS COMPLIANT



RECOMMENDED
CABLE STRIPPING DIM'S



CONNECTORS CABLES



SPECIALISTS LTD.

APRD:	UNLESS OTHERWISE SPECIFIED TOLERANCES 0.5-6 = ±0.2 >6-30 = ±0.4 >30-120 = ±0.6 >120-315 = ±1 >315-1000 = ±1.6 ANGLES = ±5°	FERRULE	BRASS	NICKEL	
CHKD:		CONTACT PIN	BRASS	GOLD	
DR:		SHELL	BRASS	NICKEL	
TITLE: N MALE CRIMP (FOR RG223, RG400, RG142)	DATE: 02/18/14"	UNIT: mm	C RING	BRASS	NONE
PART NO: NPCR223HEX	SCALE: 2.5/1	NO.	GASKET	RUBBER	RED
DRAWING NO:			BODY	BRASS	NICKEL
			INSULATOR	TEFLON	WHITE
			BODY	BRASS	NICKEL
			NO. DESCRIPTION	MATERIAL	FINISH